

# Hotels / Accommodation

**PEOPLE<sup>s</sup>**  
**AIRPORT**  
ST. GALLEN-ALTENRHEIN

EXPERIENCE THE DIFFERENCE

## Hotel Einstein \*\*\*\* SUP

[www.einstein.ch](http://www.einstein.ch)

First class hotel located in the city center of St. Gallen with a wellness and fitness area.

Distance: ca. 15 minutes  
Wi-Fi: included  
Breakfast: included  
SPA/Fitness: included

Single room (Economy): CHF 170.- (per night) CHF 120.- (day use, until 6 p.m.)  
Comfort room: CHF 200.- (per night) CHF 160.- (day use, until 6 p.m.)



## Bad Horn Hotel & Spa \*\*\*\*

[www.badhorn.ch](http://www.badhorn.ch)

The hotel Bad Horn is located directly at the Lake of Constance.

Distance: ca. 15 minutes  
Wi-Fi: included  
Breakfast: included  
SPA: included

Single room (streetside): CHF 135.- (per night) no day room available  
Single room (lakeside): CHF 185.- (per night) no day room available



## Hotel Heiden\*\*\*\*

[www.hotelheiden.ch](http://www.hotelheiden.ch)

Located up on the hills with a nice view on the Lake Constance.

Distance: 20 minutes  
Wi-Fi: included  
Breakfast: included  
SPA: included

Single room: CHF 150.- (per night) CHF 95.- (day use)



## Oberwaid \*\*\*\* Superior Hotel, St.Gallen

[www.oberwaid.ch](http://www.oberwaid.ch)

This exquisite hotel in St.Gallen will be marked by the best in traditional resort amenities & soothing spa treatments.

Distance: 20 minutes  
Wi-Fi: included  
Breakfast: included  
SPA: included

Single room: CHF 170.- (per night) no day room available



for people. by people.

# Hotels / Accommodation

**PEOPLE<sup>s</sup>**  
**AIRPORT**  
ST. GALLEN-ALTENRHEIN

EXPERIENCE THE DIFFERENCE

## Hotel Eastside \*\*\*

[www.hoteleastside.ch](http://www.hoteleastside.ch)

The business hotel is located in St.Gallen near the city center.

Distance: 20 minutes  
Wi-Fi: included  
Breakfast: included  
Fitness: included, no SPA available

Double room (Mo - Do): CHF 130.- (per night)    day room on request  
Double room (Fr - So): CHF 125.- (per night)    day room on request



## Hotel Säntispark \*\*\*\*

[www.hotel-saentispark.ch](http://www.hotel-saentispark.ch)

Located in St.Gallen the hotel Säntispark provides a large spa and wellness area.

Distance: 20 minutes  
Wi-Fi: included  
Breakfast: included  
SPA: included

Double room (for single use): CHF 185.- (per night)    CHF 100.- (day use)



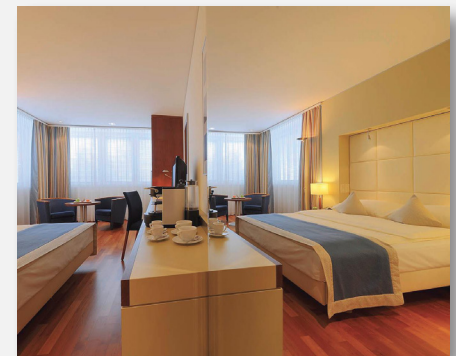
## Hotel Radisson Blu\*\*\* Business Hotel

[www.radissonblu.com/hotel-stgallen](http://www.radissonblu.com/hotel-stgallen)

The Radisson Blu hotel is located in the city center and has its own casino.

Distance: 15 minutes  
Wi-Fi: included  
Breakfast: included  
SPA: included

Single room: CHF 198.- (per night)    CHF 125.- (day use)



## Hotel Weisses Rössli

[www.weissesroessli.ch](http://www.weissesroessli.ch)

Located directly at the Lake Constance the hotel Weisses Rössli is located nearby the Airport Altenrhein.

Distance: 5 minutes  
Wi-Fi: included  
Breakfast: included  
SPA: no SPA available

Single room (streetside): CHF 79.- (per night)    CHF 80.- (day use, until 3 p.m.)  
Single room (lakeside): CHF 94.- (per night)    CHF 80.- (day use, until 3 p.m.)



for people. by people.

# Hotels / Accommodation

## Best Western Hotel Rebstock

[www.rebstock.ch](http://www.rebstock.ch)

This Best Western hotel is Located in Rorschacherberg up on the hills.

Distance:	8 minutes
Wi-Fi:	included
Breakfast:	included
SPA:	no SPA available

Single room (economy):	CHF 127.- (per night)	no day room available
Single room (deluxe):	CHF 140.- (per night)	no day room available
Suite (kingsize bed):	CHF 155.- (per night)	no day room available



## Hotel Schloss Wartegg

[www.wartegg.ch](http://www.wartegg.ch)

This bio hotel is located in Rorschacherberg with a view on the Lake Constance.

Distance:	5 minutes
Wi-Fi:	included
Breakfast:	included
SPA:	included

Double room (Mo - Do):	CHF 128.- (per night)	CHF 90.- (day use, until 5 p.m.)
Double room (Fr - So):	CHF 148.- (per night)	CHF 110.- (day use, until 5 p.m.)



## Hotel Forum Widnau

[www.forum-hotel.ch](http://www.forum-hotel.ch)

This charming business hotel is located nearby Airport Altenrhein and Vorarlberg (AT).

Distance:	20 minutes
Wi-Fi:	included
Breakfast:	included
SPA:	no SPA available

Double room (Mo - Do):	CHF 153.- (per night)	no day room available
------------------------	-----------------------	-----------------------



## Crew Transportation

For crew transportation please contact our C-Office team:

People's Airport St. Gallen Altenrhein | LSZR  
Flughafenstrasse 11  
CH - 9423 Altenrhein  
Phone +41 71 858 51 65  
[groundservices@peoples.ch](mailto:groundservices@peoples.ch)

